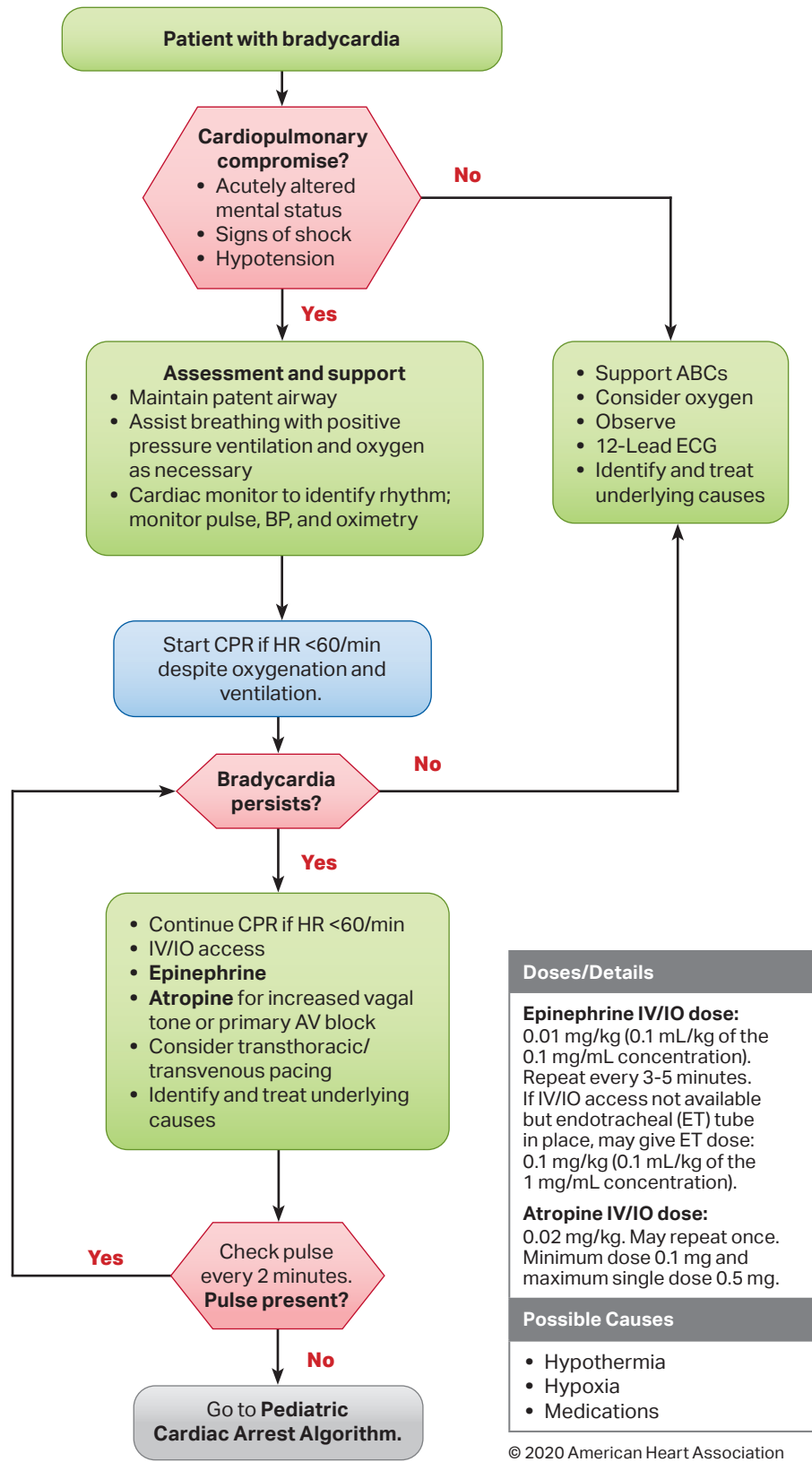


Pediatric Bradycardia With a Pulse Algorithm



Doses/Details
<p>Epinephrine IV/IO dose: 0.01 mg/kg (0.1 mL/kg of the 0.1 mg/mL concentration). Repeat every 3-5 minutes. If IV/IO access not available but endotracheal (ET) tube in place, may give ET dose: 0.1 mg/kg (0.1 mL/kg of the 1 mg/mL concentration).</p> <p>Atropine IV/IO dose: 0.02 mg/kg. May repeat once. Minimum dose 0.1 mg and maximum single dose 0.5 mg.</p>
Possible Causes
<ul style="list-style-type: none"> • Hypothermia • Hypoxia • Medications