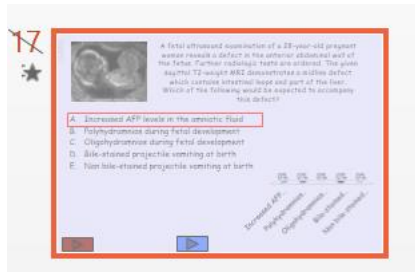


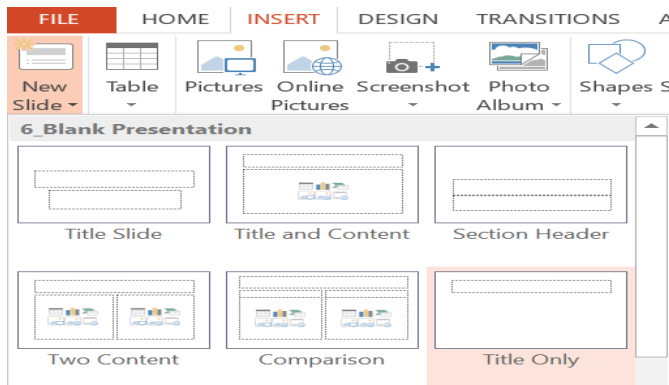
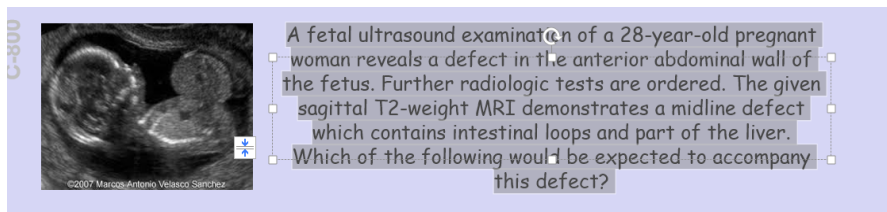
How to Convert a TurningPoint Slide with Many Characters and an Image to a Poll Everywhere Slide

Note: These instructions will need to be used when the title exceeds 500 characters.

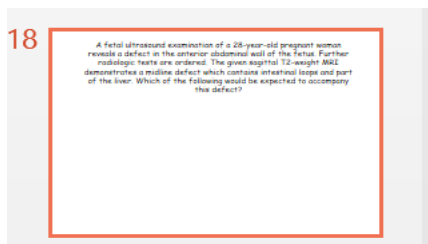
Step 1: Open a pre-existing TurningPoint presentation and select the slide that you want to convert.



Step 2: Copy text. Click on Insert on the PowerPoint ribbon and insert a new content slide.

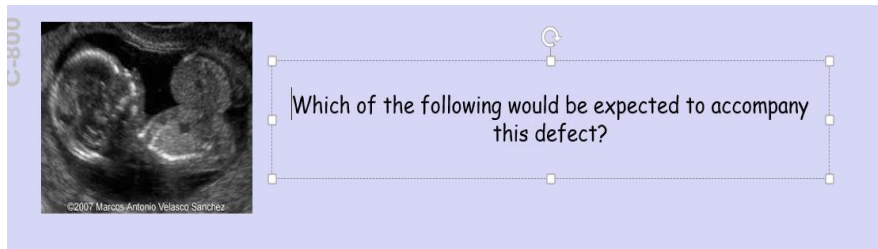


Step 3: Paste text onto the newly inserted PowerPoint slide.



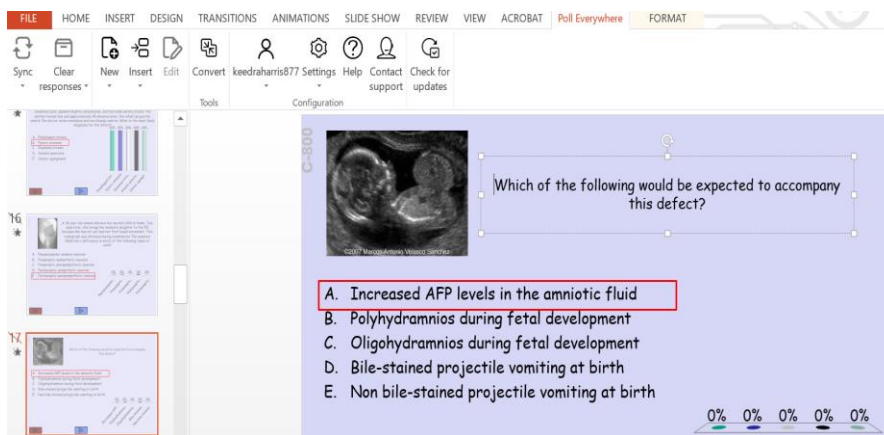
Note: Adjust text size to fit the content box and delete the question text.

Step 4: On the TurningPoint slide, delete the text that you just copied and pasted onto another slide. Do not delete the question.

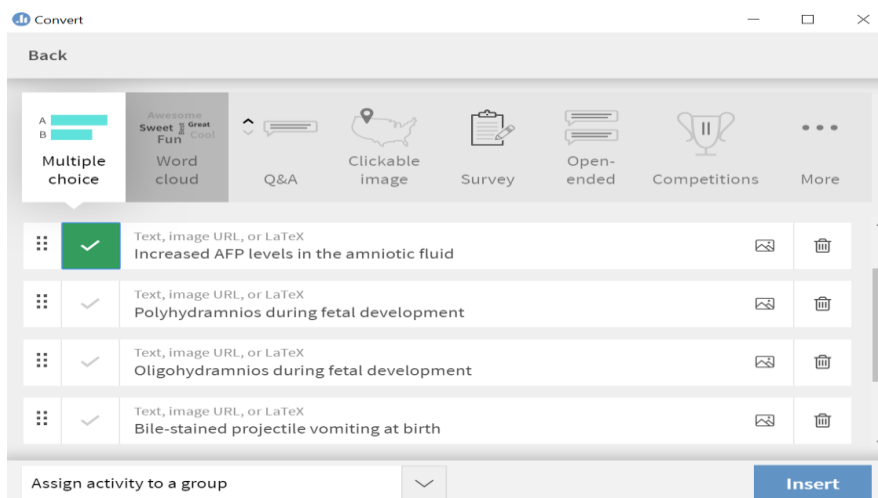


Note: This slide is called the question slide.

Step 5: While still on your question side, click the Poll Everywhere tab in the taskbar then select the Convert button.



Step 6: In the Convert to poll window, make any necessary changes and mark a correct answer if desired, then click the Insert button.



The existing PowerPoint slide is hidden and a new activity slide appears in its place.

17

Which of the following would be expected to accompany this defect?

- A. Increased AFP levels in the amniotic fluid
- B. Polyhydramnios during fetal development
- C. Oligohydramnios during fetal development
- D. Bile-stained projectile vomiting at birth
- E. Non bile-stained projectile vomiting at birth

18

Which of the following would be expected to accompany this defect?

- Increased AFP levels in the amniotic fluid
- Polyhydramnios during fetal development
- Oligohydramnios during fetal development
- Bile-stained projectile vomiting at birth
- Non bile-stained projectile vomiting at birth

Step 7: While remaining on this slide, click on the top left corner of the slide and drag it until the image is half the size of the screen.

Which of the following would be expected to accompany this defect?

- Increased AFP levels in the amniotic fluid
- Polyhydramnios during fetal development
- Oligohydramnios during fetal development
- Bile-stained projectile vomiting at birth
- Non bile-stained projectile vomiting at birth

Step 8: Copy the text (from step 2) and image and paste it onto the Poll Everywhere slide.

Note: Arrange the items on the slide to fit the slide.

A fetal ultrasound examination of a 28-year-old pregnant woman reveals a defect in the anterior abdominal wall of the fetus. Further radiologic tests are ordered. The given sagittal T2-weight MRI demonstrates a midline defect which contains intestinal loops and part of the liver.



Which of the following would be expected to accompany this defect?

- Increased AFP levels in the amniotic fluid
- Polyhydramnios during fetal development
- Oligohydramnios during fetal development
- Bile-stained projectile vomiting at birth
- Non bile-stained projectile vomiting at birth